

Addendum No. #1

A New Scott Equipment Facility for
CBS Interest LLC
Alexandria, LA

Monceaux-Buller Associates LLC
610 Desoto St.
Alexandria, LA 71301

July 15, 2024

This Addendum is issued for the purpose of modifying and/or clarifying the Bidding Documents and shall be construed as being as much a part of the Bidding Documents as though originally contained herein.

Informational:

- 1.1 Please refer to the attached, revised bid form for use in submitting your bid. Note the elimination of Alternate No. 4.
- 1.2 Please note that bids may be hand delivered to the office of the Engineer noted above or submitted by email to sampsonarch@gmail.com. The deadline for receipt of bids is revised to 12:00 noon on July 19, 2024.

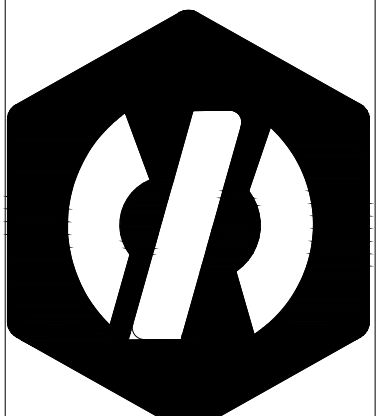
Architectural:

- 2.1 Refer to drawing detail 2/A6. Note that the metal stud supports depicted above the ceiling at the high roof for support of the acoustical ceiling grid shall be revised to a 4'-0" O.C. spacing in lieu of a 1'-4" spacing shown.
- 2.2 Refer to attached, revised drawing A12. Door Schedule: Note clouded revisions for the Parts Building.

Mechanical:

- 4.1 Refer to Mechanical drawings; note that outdoor duct from AHUE-1 shall have a 1" thick acoustic liner.
- 4.2 Refer to Mechanical drawings; note that condensate from AHU units 1, 2 & 3 shall be run to the floor drain in room 103.
- 4.3 Refer to Mechanical sheet M1, note H10; provide stands for heat pumps, however no drain pans or moisture switches are required.
- 4.4 Refer to Mechanical sheet M1; disregard note H5.
- 4.5 Refer to Mechanical drawings; provide a dry well for unit AhUE-1 similar to the one called for at the PTAC unit on sheet M2.
- 4.6 Refer to Mechanical drawings; Route condensate piping from units MS-1 and MS-2 above the ceiling to Mech room floor drain.
- 4.7 Refer to Mechanical sheet M1; Note H9; The outside air damper actuator shall be equal to A 24 VAC Honeywell M8447D-VENT/U

End of Addendum No. 1



DESIGNED BY: DJS
 DETAILED: --
 CHECKED: DJS
 CADFILE:
 DATE: SEPTEMBER 2023

DRAWING NO.

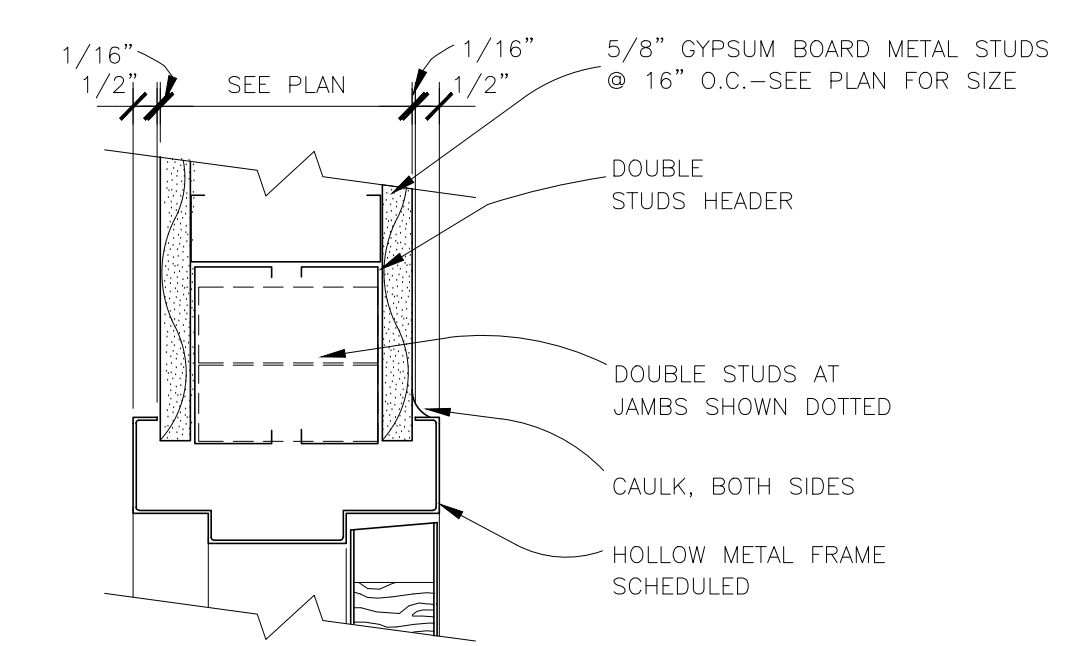
A12
 26 OF 61

DOOR AND FRAME SCHEDULE

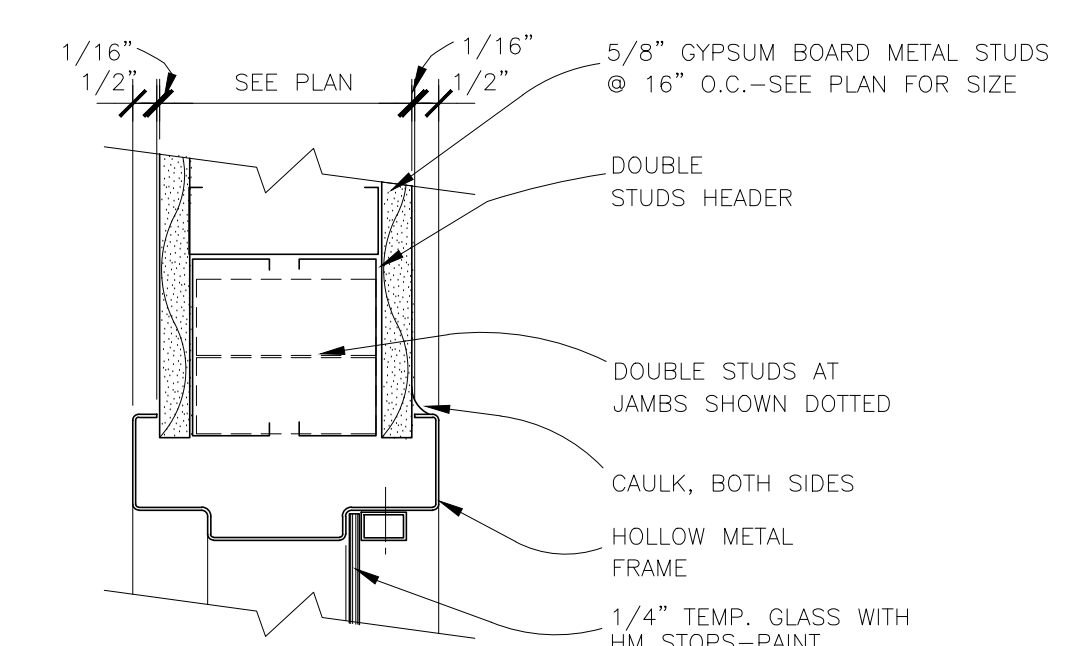
OPENING NUMBER	DOOR				NOMINAL SIZE			UNDERCUT LOUVER TYPE	U.I. RATED DOOR & FRAME	GLAZING*			FRAME		DETAILS			REMARKS / NOTES / HARDWARE			
	PAIR	INT. OR EXT. GRADE	DOOR ELEV.	MATERIAL	TYPE	FINISH	WIDTH			HEIGHT	THK.	MINUTE	THK.	TINT	TYPE	MATERIAL	FINISH		HEAD	JAMB	SILL
OFFICE/SHOP																					
100	Y	EXT	SF2	AL	ANOD	3-0	8-0	1 3/4						AL	ANOD.	12/A17	13/A17	14/A17	CONCEALED CLOSERS, PIVOTS, PUSH/PULLS, THRESHOLD, DRIP, SWEEP, CYLINDER, DOME STOPS		
101	N	INT	F	SCW	STAIN	3-0	7-0	1 3/4						HM	PAINT	3/A12	3/A12		LEVER PASSAGE SET, BUTTS, CLOSER, STOP		
102	N	INT	F	SCW	STAIN	3-0	7-0	1 3/4						HM	PAINT	3/A12	3/A12		LEVER STORAGE LOCKSET, BUTTS, STOP		
103	N	INT	F	SCW	STAIN	3-0	7-0	1 3/4						HM	PAINT	3/A12	3/A12		LEVER STORAGE LOCKSET, BUTTS, STOP		
104	N	INT	F	SCW	STAIN	3-0	7-0	1 3/4						HM	PAINT	3/A12	3/A12		LEVER PASSAGE SET, BUTTS, STOP		
105	N	INT	F	SCW	STAIN	3-0	7-0	1 3/4						HM	PAINT	3/A12	3/A12		PUSH/PULL SET, BUTTS, CLOSER, STOP		
106A	N	EXT	SF1	AL	ANOD	3-0	8-0	1 3/4			1/4"	BRZ	TEMP	AL	ANOD.	12/A17	13/A17	14/A17	PUSH/PULL, CONCEALED CLOSER, PIVOTS, THRESHOLD, DRIP, SWEEP, CYLINDER, DOME STOP		
106B	N	INT	CASED	OPENING		7-6	7-0														
107	N	INT	F	SCW	STAIN	3-0	7-0	1 3/4						HM	PAINT	3/A12	3/A12		PUSH/PULL SET, BUTTS, CLOSER, STOP		
108A	N	EXT	SF1	AL	ANOD	3-0	8-0	1 3/4			1/4"	BRZ	TEMP	AL	ANOD.	12/A17	13/A17	14/A17	PUSH/PULL, CONCEALED CLOSER, PIVOTS, THRESHOLD, DRIP, SWEEP, CYLINDER, DOME STOP		
108B	N	INT	F	SCW	STAIN	3-0	7-0	1 3/4						HM	PAINT	3/A12	3/A12		OFFICE LEVER LOCKSET, BUTTS, WALL STOP		
109	N	INT	F	SCW	STAIN	3-0	7-0	1 3/4						HM	PAINT	3/A12	3/A12		LEVER PASSAGE SET BUTTS, WALL STOP		
110A	N	EXT	SF1	AL	ANOD	3-0	8-0	1 3/4			1/4"	BRZ	TEMP	AL	ANOD.	12/A17	13/A17	14/A17	PUSH/PULL, CONCEALED CLOSER, PIVOTS, THRESHOLD, DRIP, SWEEP, CYLINDER, DOME STOP		
110B	N	INT	CASED	OPENING		4-0	7-0														
111	N	INT	F	SCW	STAIN	3-0	7-0	1 3/4						HM	PAINT	3/A12	3/A12		LEVER PASSAGE SET BUTTS, WALL STOP		
112	N	INT	F	HM	PAINT	3-0	7-0	1 3/4			180	1/4"	CLR	FIRELITE	HM	PAINT	3/A12	3/A12	LEVER LOCKSET, SS NRP BUTTS, W'STRIP, CLOSER, DOME STOP		
113	N	INT	F	SCW	STAIN	3-0	7-0	1 3/4						HM	PAINT	3/A12	3/A12		PUSH/PULL SET, BUTTS, CLOSER, STOP		
114	N	INT	F	HM	PAINT	3-0	7-0	1 3/4			180	1/4"	CLR	FIRELITE	HM	PAINT	3/A12	3/A12	LEVER LOCKSET, SS NRP BUTTS, W'STRIP, CLOSER, DOME STOP		
115	N	INT	F	HM	PAINT	3-0	7-0	1 3/4						HM	PAINT	3/A12	3/A12		OFFICE LEVER LOCKSET, BUTTS, WALL STOP		
116	N	INT	F	HM	PAINT	3-0	7-0	1 3/4						HM	PAINT	3/A12	3/A12		OFFICE LEVER LOCKSET, BUTTS, WALL STOP		
117	N	INT	F	HM	PAINT	3-0	7-0	1 3/4			180	1/4"	CLR	FIRELITE	HM	PAINT	3/A12	3/A12	LEVER LOCKSET, SS NRP BUTTS, W'STRIP, CLOSER, DOME STOP		
118	Y	INT	F	HM	PAINT	3-0	7-0	1 3/4						HM	PAINT	3/A12	3/A12		LEVER STORAGE LOCKSET, SS NRP BUTTS, ASTRAGAL, FLUSH BOLTS, DOME STOPS		
119A	N	EXT	F	HM	PAINT	3-0	7-0	1 3/4						HM	PAINT				LEVER LOCKSET, SS NRP BUTTS, CLOSER, W'STRIP, THOLD, HEAD DRIP, SWEEP		
119B	N	EXT	OH	STL	PAINT	16-0	18-0							STL	PAINT	5/A17					
119C	N	EXT	OH	STL	PAINT	16-0	18-0							STL	PAINT	5/A17					
119D	N	EXT	OH	STL	PAINT	16-0	18-0							STL	PAINT	5/A17					
119E	N	EXT	OH	STL	PAINT	16-0	18-0							STL	PAINT	5/A17					
119F	N	EXT	F	HM	PAINT	3-0	7-0	1 3/4						HM	PAINT						
119G	N	EXT	F	HM	PAINT	3-0	7-0	1 3/4						HM	PAINT						
119H	N	EXT	OH	STL	PAINT	16-0	18-0							STL	PAINT	5/A17					
119I	N	EXT	OH	STL	PAINT	16-0	18-0							STL	PAINT	5/A17					
119J	N	EXT	OH	STL	PAINT	16-0	18-0							STL	PAINT	5/A17					
119K	N	EXT	OH	STL	PAINT	16-0	18-0							STL	PAINT	5/A17					
119L	N	EXT	F	HM	PAINT	3-0	7-0	1 3/4						HM	PAINT						
120A	N	EXT	SF1	AL	ANOD	3-0	8-0	1 3/4			1/4"	BRZ	TEMP	AL	ANOD.	12/A17	13/A17	14/A17	PUSH/PULL, CONCEALED CLOSER, PIVOTS, THRESHOLD, DRIP, SWEEP, CYLINDER, DOME STOP		
120B	N	EXT	OH	STL	PAINT	10-0	12-0							STL	PAINT	5/A17					
120C	Y	INT	F	HM	PAINT	3-0	7-0	1 3/4			60			HM	PAINT	3/A12	3/A12		LEVER STORAGE LOCKSET, BUTTS, ASTRAGAL, FLUSH BOLTS, CLOSER, DOME STOPS		
120D	N	INT	OH	STL	PAINT	8-0	10-0				180			STL	PAINT	5/A17			SEE DOOR ELEVATION SCHEDULE FOR FULL REQUIREMENTS AT THIS OPENING		
121	N	INT	F	SCW	STAIN	3-0	7-0	1 3/4						HM	PAINT	3/A12	3/A12		PREFINISHED UNIT, CHAIN HOIST, LOCK KIT		
122	N	INT	F	SCW	STAIN	3-0	7-0	1 3/4						HM	PAINT	3/A12	3/A12		PREFINISHED UNIT, CHAIN HOIST, LOCK KIT		
123	N	EXT	SF1	AL	ANOD	3-0	8-0	1 3/4			1/4"	BRZ	TEMP	AL	ANOD.	12/A17	13/A17	14/A17	PUSH/PULL, CONCEALED CLOSER, PIVOTS, THRESHOLD, DRIP, SWEEP, CYLINDER, DOME STOP		
124	N	INT	F	SCW	STAIN	3-0	7-0	1 3/4						HM	PAINT	3/A12	3/A12		PREFINISHED UNIT, CHAIN HOIST, LOCK KIT		
PARTS W/HSE																					
200A	N	EXT	F	HM	PAINT	3-0	7-0	1 3/4						HM	PAINT	6/A17	7/A17	8/A17	LEVER LOCKSET, SS NRP BUTTS, CLOSER, W'STRIP, THOLD, HEAD DRIP, SWEEP		
200B	N	EXT	F	HM	PAINT	3-0	7-0	1 3/4						HM	PAINT	6/A17	7/A17	8/A17	LEVER LOCKSET, SS NRP BUTTS, CLOSER, W'STRIP, THOLD, HEAD DRIP, SWEEP		
200C	N	EXT	OH	STL	PAINT	10-0	14-0							STL	PAINT	5/A17					
200D	N	EXT	F	HM	PAINT	3-0	7-0	1 3/4						HM	PAINT	6/A17	7/A17	8/A17	LEVER LOCKSET, SS NRP BUTTS, CLOSER, W'STRIP, THOLD, HEAD DRIP, SWEEP		
200E	N	EXT	OH	STL	PAINT	12-0	14-0							STL	PAINT	5/A17					
201A	N	EXT	F	HM	PAINT	3-0	7-0	1 3/4						HM	PAINT	6/A17	7/A17	8/A17	LEVER LOCKSET, SS NRP BUTTS, CLOSER, W'STRIP, THOLD, HEAD DRIP, SWEEP		
201B	N	INT	F	HM	PAINT	3-0	7-0	1 3/4						HM	PAINT	3/A12	3/A12		LEVER LOCKSET, BUTTS, CLOSER, FLOOR STOP		
202	N	INT	F	HM	PAINT	3-0	7-0	1 3/4						HM	PAINT	3/A12	3/A12		LEVER LOCKSET, BUTTS, WALL STOP		
203	N	INT	F	HM	PAINT	3-0	7-0	1 3/4						HM	PAINT	3/A12	3/A12		LEVER PRIVACY LOCKSET, BUTTS, CLOSER, WALL STOP		

DOOR & FRAME GENERAL NOTES

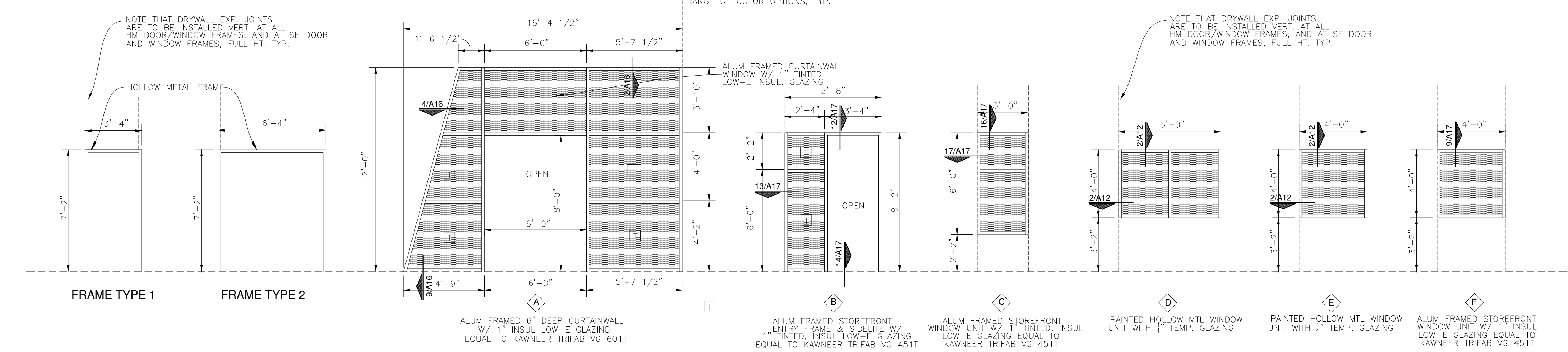
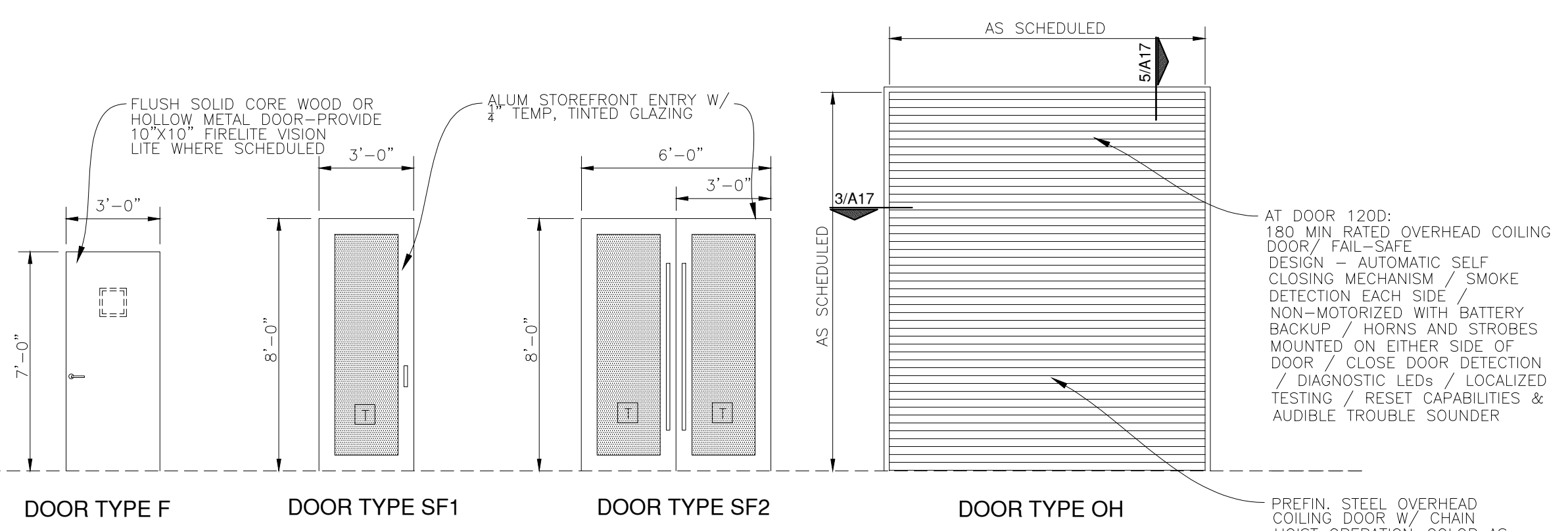
- ALL HOLLOW METAL DOORS TO BE INSULATED
- ALL OVERHEAD COILING DOORS TO BE INSULATED AND PREFINISHED
- HARDWARE SUPPLIER IS RESPONSIBLE FOR COORDINATING KEYING REQUIREMENTS WITH OWNER
- DOOR, FRAME AND HARDWARE SCHEDULE TO BE PROVIDED BY QUALIFIED HARDWARE SUPPLIER. HARDWARE SHALL MEET ALL LOCAL / STATE / FEDERAL CODE REQUIREMENTS
- INSTALL FIBERGLASS INSULATION IN ALL EXTERIOR HOLLOW METAL FRAMES
- VERIFY ALL ROUGH OPENING REQUIREMENTS WITH MANUFACTURERS DRAWINGS
- ALL DOORS SHALL MEET ADA REQUIREMENTS
- ALL DOOR THRESHOLDS SHALL NOT EXCEED 1/2" IN HEIGHT
- VERIFY FRAME DEPTHS W/ WALL THICKNESS. PROVIDE WRAP AROUND FRAMES AT STUD WALLS
- PROVIDE SEALANT BOTH SIDES OF DOOR FRAMES, WHERE DIFFERENT MATERIALS MEET AND FOR WEATHER TIGHTNESS
- ALL WOOD DOORS TO BE FACTORY FINISHED
- ALUMINUM SUPPLIER SHALL FURNISH AND INSTALL ALL HARDWARE FOR ALUMINUM DOORS. THE SAME MANUFACTURERS AND MODELS SHALL BE USED FOR BOTH ALUMINUM AND OTHER DOOR HARDWARE
- CONTRACTOR TO PROVIDE PRODUCTS AND SYSTEMS COMPLETE WITH ALL ACCESSORIES, TRIM, FINISH, FASTENERS AND OTHER ITEMS NEEDED FOR A COMPLETE INSTALLATION AND INTENDED USE AND EFFECT
- DOOR UNDERCUTS, WHERE NOTED, SHALL BE 1" (TYP.)
- PROVIDE STOREFRONT SYSTEM DRIP TRIM EDGE ABOVE ALL EXTERIOR STOREFRONT DOORS
- OVERHEAD COILING DOORS TO BE PREFINISHED WITH COLOR AS SELECTED FROM MANUFACTURERS FULL RANGE OF COLOR OPTIONS



3 INTERIOR DOOR HEAD/JAMB
 SCALE: 3" = 1'-0"
 NOTE THAT DRYWALL EXP. JOINTS ARE TO BE INSTALLED VERT. AT ALL HM DOOR/WINDOW FRAMES, AND AT SF DOOR AND WINDOW FRAMES, FULL HT. TYP.



2 INTERIOR WINDOW HEAD/JAMB
 SCALE: 3" = 1'-0"
 NOTE THAT DRYWALL EXP. JOINTS ARE TO BE INSTALLED VERT. AT ALL HM DOOR/WINDOW FRAMES, AND AT SF DOOR AND WINDOW FRAMES, FULL HT. TYP.



1 DOORS, FRAMES AND STOREFRONT ELEVATIONS
 SCALE: 1/4" = 1'-0"

T TEMPERED GLASS LOCATION